

Community Foundation
of the Lowcountry
2011
Annual Report





COMMUNITY FOUNDATION OF THE LOWCOUNTRY

Mission Statement

Strengthening community by connecting people, resources, and needs.

Vision Statement

The Community Foundation of the Lowcountry is the most respected and able provider of philanthropic direction, management, education and support to the people in the communities we serve.

Core Values

The Community Foundation of the Lowcountry is dedicated to the principles of integrity, honesty, respect, fairness, caring stewardship and responsiveness.

Guiding Principles

The Community Foundation of the Lowcountry is committed to:

- building a caring regional community.
- advocating private giving for the public good.
- providing philanthropic services to donors of all means.
- convening and connecting community resources.
- being a source of knowledge regarding issues affecting the community.
- taking the initiative to improve the community through philanthropy.
- being held to the highest ethical standards through fairness in policies and procedures, full and objective review of funding requests, and the avoidance of conflict of interest.
- measuring outcomes and demonstrating results in all its philanthropic activities.
- being an integral part of the national community foundation field and philanthropy as a whole.

These guiding principles reflect the commitment of the Community Foundation of the Lowcountry to provide the most effective stewardship of the charitable resources with which it has been entrusted.

TABLE OF CONTENTS

Message from the Chairman and President and CEO	4
Board of Trustees	5
Community Foundations	6
Fast Facts	7
Examples of your Community Foundation at Work	
Strengthening Nonprofits	8
Preserving our History - Mitchelville Presentation Project	9
Inspiring Arts - the Public Art Exhibition on Hilton Head Island	10
Creating the Future - Bluffton Elementary Schools Robotics	11
Aging with Grace - Hilton Head Safe Harbour	12
Leaving a Gift – The Lundys	13
Funds at the Community Foundation	
Building Stronger Communities	17
Business Partners	18
Investment Management	18
Summary of Financials	19
Staff and Credits	19

MESSAGE FROM THE CHAIRMAN AND THE PRESIDENT AND CEO

Dear Friends,

As the Community Foundation celebrates 17 years, it is important to recognize the founding vision behind it. Our founders sought to create a vehicle to connect community members and their passion and philanthropic spirit to the myriad of needs that surround us.

This vision has not changed, but the needs have grown. We see nonprofits facing mounting and complex challenges. We see donors enthusiastic about meeting those challenges. We see the demand for our services at an all time high.

As proud members of the Lowcountry area, we have a deep understanding of the challenges and needs here, and we are working hard to address those needs. Since inception, through the help of many donors, we have given over \$37 million in grants from our more than 250 funds, meant to enrich and benefit the lives of our community members and beyond. In spite of market fluctuations, our assets continue to trend upward as well, and donor support is a large part of that success. The Community Foundation looks forward to continued growth to build better communities throughout our area.

As we celebrate our accomplishments, and look to the future, we recognize our key partners and stakeholders who make our mission possible. We thank our Community Foundation donors, business partners and nonprofit visionaries. And we recognize our outstanding board for their commitment, generosity and the vision that has sustained the Community Foundation of the Lowcountry.

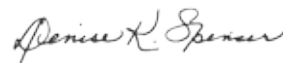
Join Us in making a lasting difference in our community.

Sincerely,



Ernst W. Bruderer,
Chairman

Sincerely,



Denise K. Spencer,
President and CEO

COMMUNITY FOUNDATION OF THE LOWCOUNTRY BOARD OF TRUSTEES

The Community Foundation receives gifts in many forms. Among the most precious gifts are time, talents, and hard work donated by our volunteer-trustees.

Chairman – Ernst W. Bruderer

Vice Chairman – Nathaniel B.P. Jones

Vice Chairman – Perry L. Washington

Treasurer – Tommy C. Arnold

Mark L. Baker

Marva J. Brooks**

Brian J. Carmines

Berryman W. Edwards

Eileen M. Fitzgerald

Meredith I. Harlacher

J. Dudley King, Jr.**

Lin J. Laffitte**

Helen (Dede) Mavrogordato

Elizabeth B. Mayo**

Peggy S. Parker*

Jerry H. Reeves III*

Charles A. Scarminach*

Roger Sorg, DO*

William Stinnett III

Valerie Truesdale**

Jonathan G. Verity*

W. Mitchell Wade**

Wade J. Webster*

J. Eric Woods **

*Term ended June 30, 2011 **Term began July 1, 2011

WHAT ARE COMMUNITY FOUNDATIONS ANYWAY?

Community foundations are tax-exempt public charities serving thousands of people who share a common interest—improving the quality of life in their area.

Individuals, families, businesses, and organizations create permanent charitable funds that help their region meet the challenges of changing times. The foundation invests and administers these funds.

All community foundations are overseen by a volunteer board of leading citizens and run by professionals with expertise in identifying their community's needs.

Community foundations:

- know their communities
- share your interests
- care about the future
- offer giving vehicles that are easy to set up and manage and that provide tax benefits



Why invest in a community foundation?

There are many reasons to invest in your local community foundation. Community foundations go beyond simply making grants that advance charitable activities. They also identify current and emerging issues, channel resources to address their communities' needs, and help their regions prepare for the future.

Community Foundation National Standards Compliance

Developed in the spirit of accountability, transparency, and continuous self-improvement, the National Standards for U.S. Community Foundations are philanthropy's most rigorous standards—evidence that community foundations seek excellence for their communities and donors. The process of National Standards Compliance is repeated every five years; assuring that as legislative changes occur, or best practices in the field change, community foundations are keeping pace. The Community Foundation of the Lowcountry was recently reconfirmed in compliance with National Standards. YOUR COMMUNITY FOUNDATION continues to be dedicated to our core values: integrity, honesty, respect, fairness, caring stewardship and responsiveness.

COMMUNITY FOUNDATION OF THE LOWCOUNTRY FAST FACTS

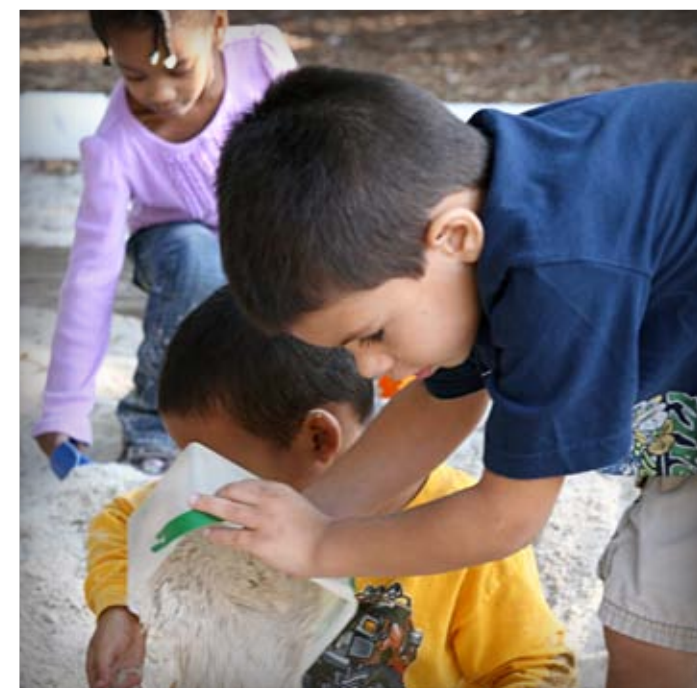
As of June 30, 2011

- Year Founded: 1994
- President and CEO: Denise K. Spencer
- Board of Trustees: 18
- Board Chairman: Ernst Bruderer
- Total assets: \$42.5 million
- Fiscal Year 2011 Grantmaking: \$2.9 million
- Grantmaking since inception: \$37.6 million
- Charitable funds: 250+
- Location: Hilton Head Island, SC
- Service area: Beaufort, Colleton, Hampton and Jasper Counties

STRENGTHENING NONPROFITS

A vital nonprofit sector is essential to our region, especially during tough economic times. Since 1994, the Community Foundation of the Lowcountry has provided high impact services that link individuals to nonprofits, strengthen the governance and leadership capacity of our region's nonprofit sector and engage boards in meaningful service.

The ability of a nonprofit to succeed is dependent, however, on far more than these opportunities alone. A nonprofit's capacity to grow, to fulfill its mission, and to operate efficiently and effectively is reliant upon the knowledge and ability of its board and staff, a strong governance framework, and a strategic approach to all of the aspects of its work—from program execution to marketing to fund development. Like any other skills, these are learned. And in many cases, those who volunteer to serve on nonprofit boards have not had the training necessary to assure their capabilities in these areas.



Over the past several years, the Community Foundation of the Lowcountry has recognized the need for capacity-building support, and has increased its services to include:

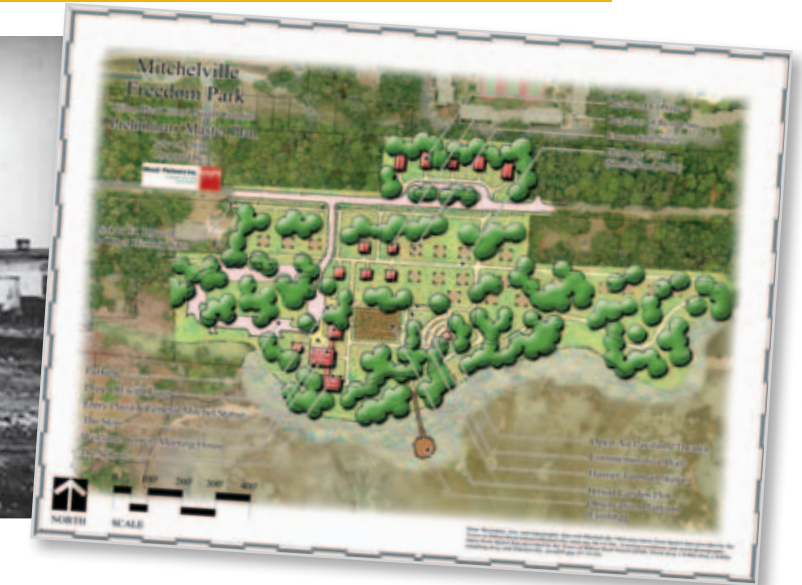
- “Charitable Connections” – This is a special section of our website where nonprofits can list some of their needs, and potential donors can review them and address them as they desire and are able.
- Nonprofit Board Orientation – We work with the nonprofit executive and the board chair to develop a program which teaches new and existing board members about the nonprofit sector, the history and programs of their nonprofit organization, the operations of their board, and basic nonprofit board roles and responsibilities.
- Nonprofit Board Roles and Responsibilities – A subset of the orientation mentioned above, this session helps nonprofit boards to understand the basics of what is legally required of them as well as baseline practices for all nonprofits.
- Exceptional Boards – This session is Part II of the Nonprofit Board Roles and Responsibilities, and gets into the area of best practices for nonprofits and the strategic partnership between the chief executive and the board.
- The Value of Endowments – This provides information on what an endowment is, its benefits, how it operates, and the option of utilizing the services of the Community Foundation in this effort.
- Consultation on Governance Concerns – Boards sometimes have issues specific to their operations that require an additional knowledge base that does not rise to the level of legal advice. Depending on the knowledge and skill of Community Foundation staff with such issues, we may be able to offer support.
- Organization Development Grants – These are small grants that assist a nonprofit board in hiring a consultant to provide help with specific areas that strengthen the board, such as strategic planning, the development of a marketing plan, legal assistance with a merger with another nonprofit, etc. Additional information about these grants can be found on the Community Foundation Website, or in conversation with Dr. Cynthia Smith, Vice President for Grantmaking and Community Leadership at the Community Foundation of the Lowcountry.

We encourage local nonprofit leaders and board members to contact the Community Foundation of the Lowcountry to learn more about, and contribute to our Strengthening Nonprofits Initiative.

PRESERVING OUR HISTORY - MITCHELVILLE PRESENTATION PROJECT



MITCHELVILLE AROUND 1865



The mission of the Mitchelville Preservation Project is to save Historic Mitchelville from oblivion; to reveal a uniquely American story of freedmen who created a culture of sacrifice, resistance and resilience in a quest to define an inclusive freedom.

There was no doubt that the passion existed for the mission. The question was how to make it happen. With a \$5,000 Organization Development Grant from the Community Foundation in early 2011, a group of committed citizens is learning just that.

Organization Development Grants are designed to retain a consultant to help existing nonprofits strengthen themselves organizationally, increasing their capacity to govern and achieve long-term sustainability.

The grant has been used to retain a consulting firm to work with the board of directors on the creation of marketing and public relations plans as well as to provide training on implementing fund development strategies.

The Mitchelville Preservation Project Fund was established at the Community Foundation in 2010 to help the organization meet its bold mission. To learn more about how organization funds help our community, please visit www.cf-lowcountry.org.

History

General Mitchel, then Commanding General of the Department of the South, a Union soldier, but a son of the South, envisioned what was at that time a revolutionary plan by which former slaves would make the transition from slavery to freedom.

In early 1862, after enduring intolerable conditions, General Ormsby M. Mitchel employed a radical idea to address the issue of overcrowding in housing. He ordered that a large plot of land, outside the boundaries of Fort Walker, off of the old Drayton Plantation, be set aside on Hilton Head Island for former slaves.

The Mitchelville plan focused on freedom; self-government; land ownership; independent farming; wage-based labor and commerce; volunteer military service and education in various areas of domesticity. In addition, “every child, between the ages of six and fifteen years, residing within” Mitchelville was required to attend school - the first compulsory education law in South Carolina. At its core, the plan addressed the former slaves yearning for freedom.

The historic site was later designated Mitchelville to pay honor to General Mitchel.

INSPIRING ARTS - THE PUBLIC ART EXHIBITION ON HILTON HEAD ISLAND



JONATHAN BOWLING AND "FAMILY"

The Community Foundation of the Lowcountry believes that not only do the arts provide much needed social enrichment for many in our communities—they also help drive local economies and enhance educational landscapes. All of these reasons helped to solidify our decision to embark on the very ambitious goal of creating the inaugural Public Art Exhibition on Hilton Head Island.

This exhibition has been an occasion to honor and embrace Hilton Head Island's rich history and cultural influences. Selected from a field of more than 300 entries, 20 outdoor pieces from all over the country make up the exhibition and our host location and partnership with the Coastal Discovery Museum at Honey Horn is the perfect setting.

The ultimate goal was to have our nationally-recognized jury select a piece for purchase to be contributed to the Town of Hilton Head Island's growing public art collection. In addition, guests were able to cast a vote for their favorite piece onsite or through the Exhibition's website through October 30, 2011.

This Exhibition is part of our mission to educate and inspire the residents and visitors of Hilton Head Island and its surrounding communities. We believe that art isn't something we should always have to make plans to see, or buy a ticket to visit. Instead, art belongs in our everyday environment where we can run into it, where it can unexpectedly alter our day and our world. We hope with this exhibition and our goal to increase the public art collection on Hilton Head Island, we have made this a reality.

The exhibition's nationally recognized jury has recommended the large scale sculpture titled "Family" (shown left) by Greenville, North Carolina sculptor Jonathan Bowling for purchase and permanent installation on Hilton Head Island.

The People's Choice winner was "Modus Vivendi" created by Hilton Head Island artist Kevin Eichner. Second place went to Mark Krucke from North Carolina for his piece titled "Fortitude," and third place was awarded to John Merigian from Michigan for "An Intimate Stroll."

The Public Art Exhibition is free and open to the public through December 31, 2011. More information is available at www.hhipublicart.org.

Most, if not all of the pieces at the Exhibition are for sale with a portion of the proceeds seeding future Public Art Exhibitions. Prices range from \$3,800 - \$53,000. To inquire about a purchase, please contact the Community Foundation at 843.681.9100

SPONSORS

Named Sponsor for People's Choice Award
Alston + Bird

Platinum Level
The Greenery

Town of Hilton Head Island
Beaufort County

Gold Level

CareCore National
Hilton Head Island-Bluffton Chamber of Commerce
Spinnaker Resorts

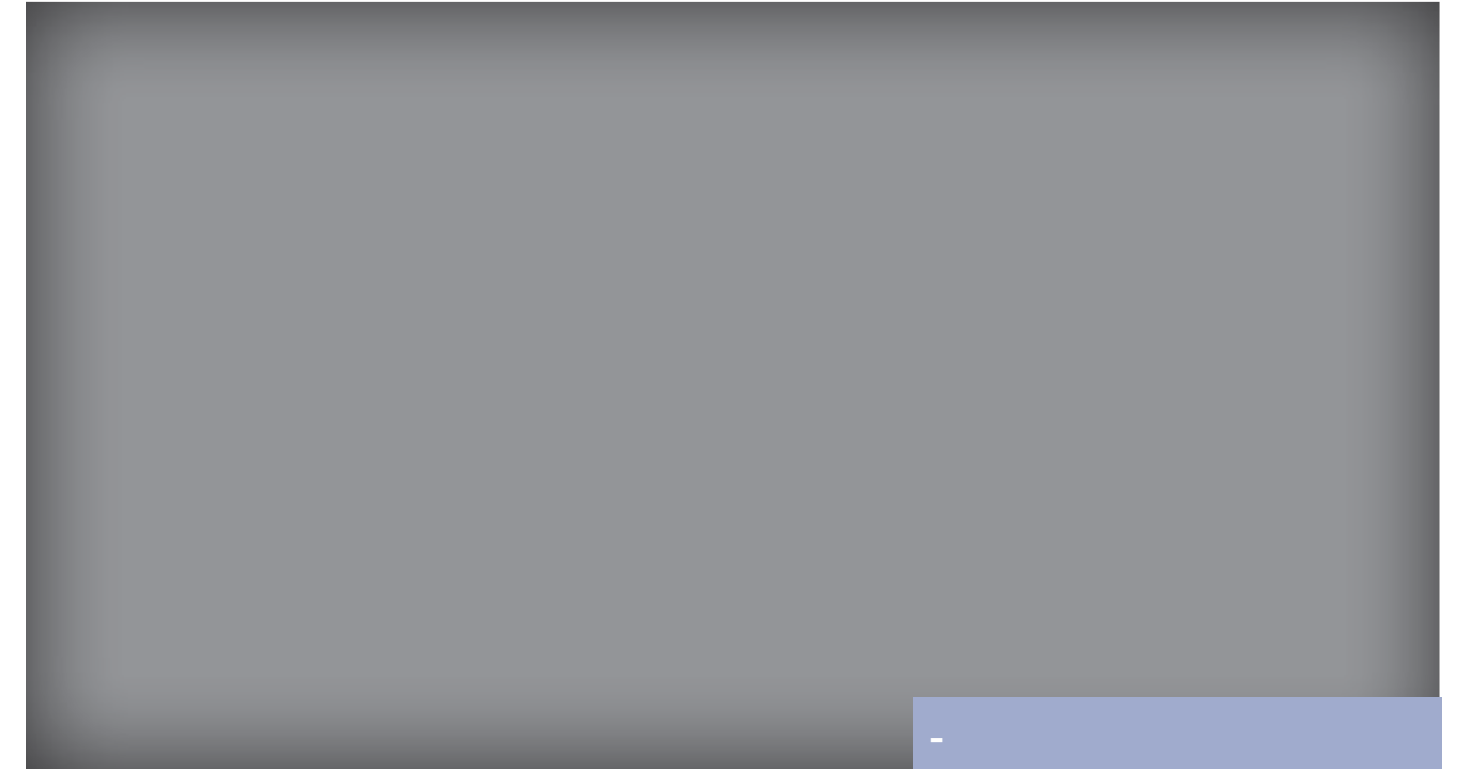
Silver Level

Morris & Whiteside Galleries
Hilton Head Monthly
Hudson's Restaurant

Bronze Level

Sea Pines Resort
Wood + Partners
World Design Marketing
Year Round Pool

CREATING THE FUTURE - BLUFFTON ELEMENTARY SCHOOLS ROBOTICS



A glimpse of the future can be found at elementary schools throughout Bluffton thanks to a grant of more than \$37,000 from the Community Foundation.

The recent implementation of an Animation and Robotic Center (ARC) at each of four Bluffton elementary schools has provided 3,400 students with expanded learning

Everyone here has the sense that right now is one of those moments when we are influencing the future.

- Steve Jobs

opportunities using leading technologies that will better prepare them with the knowledge, skills and personal responsibility to succeed in a rapidly changing global society.

Labs such as these provide students with opportunities for increased engagement in the learning process which, in turn, can increase their motivation to learn. This project focus is on the use of robotics to engage students in real problem solving and collaborative learning while learning math, science, and technology concepts at a concrete level, thus helping to prepare students for the fast-paced technological environment they will face as adults.

AGING WITH GRACE - HILTON HEAD SAFE HARBOUR



SAFE HARBOUR VOLUNTEER
GINNY ALAMPI (SECOND FROM LEFT)
WITH FRIENDS AT INDIGO PINES

Safe Harbour is a nonprofit membership service organization designed by and for Hilton Head Islanders who want to stay in their own homes as they age, continuing to enjoy lifestyles that make Hilton Head Island a special place, with the confidence of knowing that assistance is just a phone call away.

Safe Harbour members pay moderate annual dues and are then entitled to receive all services provided by Safe Harbour volunteers without any additional payments. Safe Harbour currently has a few dozen members who utilize its services, and a group of 40 certified volunteers.

Safe Harbour offers varied support services to its members, including transportation to doctors, stores, and social events; grocery shopping; assistance with household chores; regular phone calls and visits; respite for caregivers; and technical help. For tasks that require professional assistance, Safe Harbour refers members to its network of reliable local vendors.

Through a recent \$26,800 grant from the Community Foundation, Safe Harbour was able to hire its first executive director and secure office space and related equipment.

LEAVING A GIFT - THE LUNDYS



GINNY AND DICK LUNDY

Dick Lundy first came to Hilton Head Island in 1973 for a convention. His future would soon guide him back as he and his wife Ginny decided to make the Island their home. Dick quickly became involved in real estate as well as a local Rotary club – retirement, it seems, was put on the back burner.

In 2007, Dick and Ginny established the Richard D. Lundy and Virginia E. Lundy Fund with the Community Foundation - their generous giving supporting the arts, higher learning institutions and libraries as well as healthcare clinics.

Dick passed away in 2008, Ginny in 2010 after long and meaningful lives. And while they were able to see the good work of their fund while alive, perhaps the greatest impact is yet to be made. As part of their estate plans, they made a provision for their fund to continue through a bequest of a combination of liquid assets and highly valued tangible property, continuing their generous giving well into the future.

The Legacy Society is an organization of benefactors of the Community Foundation of the Lowcountry and the Hilton Head Island Foundation who have made provisions to leave a gift to the community foundation in their wills or estate plans. Too often, such gifts go unrecognized because they come at the end of the donors' lives. The Legacy Society provides a way to recognize and thank donors during their lifetimes.

For a list of Legacy Society members and to learn more about how to leave your legacy, please visit our website at www.cf-lowcountry.org

A man has made at least a start on discovering the meaning of human life when he plants shade trees under which he knows full well he will never sit.

- D. Elton Trueblood



We know that you, as a donor, care. We know that you want to do good and to do it well, to act beyond random acts of kindness and achieve more than a tax shelter.

The Community Foundation of the Lowcountry strengthens community by connecting people, resources and needs. And we unite your wish to make a difference with a meaningful way to get there.

Donors in our communities are as varied as the needs in the Lowcountry we serve. We guide individuals, families, businesses and organizations with all sizes of charitable resources at their disposal.

For our fiscal year 2011, the Community Foundation received more than \$3 million in gifts from over _____ donors to our more than 250 funds.

For a complete list of our generous donors for July 1, 2010 – June 30, 2011, please visit our website at www.cf-lowcountry.org.

FUNDS AT THE COMMUNITY FOUNDATION OF THE LOWCOUNTRY

You may choose to establish an unrestricted fund in your name, or the name of a family member, allowing the Community Foundation to determine where grants will do the most good. **Unrestricted funds** offer maximum flexibility to react to changing needs in the community. Using grants from unrestricted funds in combination with Board leadership, the Community Foundation has acted as a community problem solver in areas ranging from addressing the health needs of underserved populations to affordable water and sewer services for low-income homeowners.

Community Foundation of the Lowcountry Unrestricted Endowment Fund (2000)

Marion M. Dutcher Memorial Fund (2011)

Memorials and Special Occasions Fund (2011)

Operating Fund (1996)

Lowell H. and Betty J. Van Epp Memorial Fund (2010)

Virginia S. von Hoffman Memorial Fund (2011)

A **field-of-interest fund** allows you to support an area of charitable interest, defined broadly (such as education) or narrowly (such as technical training). You also can select a defined geographic area or specific community to benefit from your named fund. Field-of-Interest Funds have been established for a range of causes from arts and culture to healthcare. You establish a process to make grants to nonprofit organizations doing work in this area. You can stay involved, help to suggest an advisory committee, or leave the work to the Community Foundation Board. It's your choice.

For FY2011, more than \$872,000 was granted from Field of Interest Funds

Coastal Empire Community Mental Health Consumer Crisis Fund (2009)

Disaster Recovery and Rebuilding Fund (2004)

Charles and Geraldine Doerger Fund (1995)

Dorothy M. Falconer Charitable Fund (2003)

Colleton River Plantation Club Operation Santa Claus Fund (2011)

Berkeley Hall Charitable Fund (2010)

Betti Crosby – PEARLS Early Childhood Education Fund (2010)

Family Assistance Fund (2004)

Arnold Fields Community Endowment Fund (2001)

Elizabeth Mellard Graves Foundation for Cancer Care Fund (2009)

Greater Bluffton Community Endowment Fund (2008)

Hargray Caring Coins Foundation (2003)

Hilton Head Island Foundation Endowment Fund (2008)

The David and Anne Houston Fund (2003)

Kiwanis Club of Beaufort Charitable Fund (2011)

Jasper Roots Endowment Fund (2008)

Frank H. and Anita L. Johnson Medical Assistance Fund (2005)

Junior Jazz Foundation Fund (2006)

The Herb King Memorial Fund (2009)

Long Cove Community Endowment Fund (2003)

Will Miles Lymphatic Research Fund (2008)

Mission A2J – Athletes Assisting Japan Fund (2011)

PEARLS' Girls Endowment Fund (2011)

PEARLS of Hampton County Endowment Fund (2007)

Public Art Fund (2005)

Rotary Club of Hilton Head Island Charitable Programs Fund (2011)

Ruth M. Seaman Fund (1995)

TidePointe Community Charitable Fund (2009)

Touch Tomorrow Beaufort Endowment Fund (2008)

Touch Tomorrow Bluffton Endowment Fund (2008)

Touch Tomorrow Colleton County Endowment Fund (2008)

Touch Tomorrow Hampton County Endowment Fund (2008)

Touch Tomorrow Hilton Head Island/Daufuskie Endowment Fund (2008)

Touch Tomorrow Jasper County Endowment Fund (2008)

Euline H. Van Vactor Charitable Fund (2002)

Volunteer Action Center Fund (2011)

Women in Philanthropy Endowment Fund (2003)

Designated funds are created to ensure that support will be provided to one or more specific charitable organizations chosen by you. Designated funds often are endowed in perpetuity with the income used to support the organizations on an on-going basis. The Community Foundation ensures that disbursements are made to appropriate charitable agencies as specified in the establishing fund document. If a nonprofit organization stops functioning as an exempt charity or ceases to exist, the Community Foundation's Board may select an alternative charity as indicated in the fund document.

For FY2011, more than \$1,556,000 was granted from Designated Funds

Opal D. Abbink Endowment Enhancement Fund (2002)

Alzheimer's Respite and Resource Building Fund (2009)

Ames Family Fund (2004)

The Jacqueline S. Ballantyne Designated Fund (2007)

Larry and Kay Bangs Charitable Fund (2008)

Beaufort County Rail Trail Fund (2005)

Beaufort County School District Education Foundation Fund (2008)

Beaufort Three-Century Project (2008)

Bluffton Community Stadium Fund (2004)

William E. Brown, Jr. Charitable Fund (2005)

David M. Carmines Memorial Foundation Fund (2010)

Center for Constitutional Research and Education Project Fund (2011)

Chairmen's Leadership Award Fund (2002)

Changing Expectations, Enhancing Futures Fund (2009)

Colcock-Teel House Endowment Fund (2011)

Conway-Ennen Fund (1997)

Conway-Ennen Women's Resource Center Fund (1996)

Deep Well – Charlotte Heinrich Memorial Building Endowment Fund (2002)

Driving Young America Fund (2007)

Friends of the Hilton Head Library Mission Support Fund (2011)

Friends of NAMI Fund (2005)

Marian G. Graham Endowment Fund (2007)

Grassroots Leadership Development Fund (2000)

H.A.N.D. – Helping Animals Needing Doctors Fund (2011)

Hilton Head Island Appreciation Week Fund (2002)

Hilton Head Island Recreation Association Fund (2007)

Hilton Head Community Rowing and Sailing Center Fund (2008)

Hilton Head Island Sewer Assistance Fund (Project SAFE) (2000)

Italian American Club of Hilton Head Fund (2008)

Johnston Heart and Stroke Caring Fund (1999)

Kiwanis Club of Hilton Head Island Fund (2006)

Lewis Family Charitable Fund (2007)

Richard D. Lundy and Virginia E. Lundy Fund (2007)

Mitchellville Preservation Project Fund (2010)

Sherry H. Munday Memorial Fund (1989)

Operation R&R Project Fund (2008)

Palmetto Animal League Fund (2010)

Programs for Exceptional People Building Fund (2003)

Red Fields to Green Fields Project Fund (2011)

River Smart Fund (2010)

Rotary Club of Hilton Head – Alzheimer's Respite and Resource Building Fund (2008)

South Carolina Repertory Company Fund (2007)

Strengthening Nonprofits Initiative Fund (2010)

Strub Family Charitable Fund (2011)

Temple Oseh Shalom Fund (2007)

Tenet Healthcare Fund (1997)

Veterans Memorial Fund (2005)

Connie Voight Charitable Designated Fund (2011)

Waddell Mariculture Center Fund (2009)

Peter E. and Nettie Wile Charitable Fund (2006)

YANA Club Building Fund (2000)

Yemassee Revitalization Corporation Project Fund (2008)

Youth Technology Endowment Fund (2011)

A **donor advised fund** is a flexible tool for charitable giving, operating much like your own personal or family foundation. You contribute to the fund when it is most convenient and then recommend grants over time to nonprofit organizations of your choice. You select a fund name and then enjoy recommending grants to organizations committed to the causes you care about. You also can involve your children to share in a family tradition of giving. Funds may be endowed or non-endowed.

For FY2011, more than \$409,000 was granted from Donor Advised Funds

The Annabel Elise Fund (2008)

Anonymous Fund (2003)

Thomas C. and Genevieve H. Arnold Fund (2006)

Mary Stuart Parker Alderman Fund (2005)

Hannah White Barnwell Fund (2004)

The Bethea Family Fund (2006)

Joe and Kaye Black Family Fund (2003)

Donald and Teresa Brashears Foundation (2005)

Brennan Family Fund (2002)

Art and Jerry Brown Fund (2002)

The Coligny Fund (2006)

Cora Bett Thomas Realty- South Carolina Giving Fund (2007)

Melvin and Lou Davis Fund (2002)

DeZeeuw-Clark Organization Fund (1998)

Diana Family Fund (2003)

Berry and Ruthie Edwards Giving Back Fund (2007)

Elder Family Fund (2001)

Fitzgerald and Forrest Charitable Fund (2011)

James and Gretchen Foley Foundation (2004)

Mitzi S. Ganelin Fund (2002)

The Merle J. Graham Charitable Fund (2008)

Mary Elizabeth Graves Endowment Fund (2009)

M.I. and P.A. Harlacher Fund (2007)

Houston Fund (2000)

Johnsen Family Fund (2003)

Johnsen-Nelson Family Fund (2000)

Samuel Stafford Law Jones Fund (2008)

Susan M. Ketchum Fund (2001)

Kiddoo Fund (2003)

Kiwanis Club of Hilton Head Island Fund (2006)

Beryl and Peter LaMotte Fund (2005)

LaRLyn Fund (2008)

Bernard C. Moscovitz Charitable Fund (2004)

Bill and Carole Mottel Fund (2004)

Noble Jonas Charitable Fund (2001)

Peggy Parker Charitable Endowment Fund (2011)

Parker Family Charitable Fund (2011)

Peter and Lynn Parrott Fund (1999)

Queen of Hearts Fund (2011)

Gail Quick Charitable Fund (2006)

David and Kelly Ruckno Family Foundation Fund (2007)

Schuilig Fund (2000)

Ann and Julius Scott Charity (2001)

John Seely Fund (2003)

Catherine R. Smith Memorial Fund (2004)

Stuckart Family Fund (2007)

Thomas W. and Caroline W. Tucker Family Fund (2004)

Verhey Family Fund (2008)

Connie Voight Charitable Fund (2011)

N. Jean Washington Memorial Fund (2010)

John and Beth Weymouth Family Fund (2007)

The La Junta White Stovall Memorial Fund (1998)

Martha C. Worthy Charitable Fund (2008)

The Zonta Club of Hilton Head Island Fund (2007)

Create a permanent pool of assets for your nonprofit organization by creating an **organizational endowment fund**. There are many advantages to creating an organizational endowment within the Community Foundation.

For FY2011, more than \$235,000 was granted from Organizational Endowment Funds

Arts Center of Coastal Carolina Endowment Challenge 2000 Fund (2001)

Beaufort County School District Education Foundation Endowment Fund (2008)

Child Abuse Prevention Association Endowment Fund (2006)

Citizens Opposed to Domestic Abuse Endowment Fund (2007)

Friends of the Hilton Head Island Library Endowment Fund (1998)

Friends of the Rivers Endowment Fund (2003)

Hilton Head Orchestra Endowment Fund (1999)

Hilton Head Orchestra Endowment Challenge 2000 Fund (2000)

Hospice Care of the Lowcountry Endowment Challenge 2000 Fund (2000)

Literacy Volunteers of the Lowcountry Endowment Fund (2003)

Programs for Exceptional People Endowment Challenge 2000 Fund (2002)

Sea Pines Montessori Academy Endowment Fund (2011)

The Children's Center Endowment Challenge 2000 Fund (2002)

United Way of Beaufort County Endowment Fund (2003)

Volunteers in Medicine Endowment Challenge 2000 Fund (2000)

Ella C. White Memorial Scholarship Endowment Fund (2005)

Through scholarship funds, you can support worthy students at an institution (college, technical school), students in a particular field of study, or students from a particular geographic area. You can choose to stay involved through an advisory relationship as a member of an advisory committee, or allow the Community Foundation to select students based on your selection criteria. Either way, the Community Foundation handles the necessary paperwork and ensures that scholarships are distributed in an equitable manner.

For FY2011, more than \$332,000 was granted from Scholarship Funds

Ellie and Michael Agresta Scholarship Fund (2010)

Beaufort County Law Enforcement Education Fund (2002)

Fred and Susan Breidenbach Scholarship Fund (2003)

British Open Pub Scholarship Fund (2004)

Maria G. Bryant Scholarship Fund (2007)

Herman K. Gaither Scholarship Fund (2005)

Dianne K. Garnett Scholarship Fund (2006)

Robert F. Garnett, Sr. Scholarship Fund (2010)

Gulfstream Goldie Glenn Scholarship Program (2003)

Kathy's Race Scholarship Fund (2006)

Jeff Katon Scholarship Fund (2008)

James L. Krum Memorial Scholarship Fund (2004)

Mildred M. Landback Memorial Scholarship (2000)

R and J Matchett Scholarship Fund (2008)

McClure Family Scholarship Fund (2008)

Bonnie Miller Smith Scholarship Fund (2001)

Camden F. Moody Scholarship for Dance (2000)

Mina Larson and Mandas Mulrain Scholarship Fund (2005)

Oak Advisors, LLC Scholarship of Excellence (2008)

Okatie Rotary Club Scholarship Fund (2004)

Smith Stearns Tennis Academy Scholarship Fund (2006)

Sun City Challenge Scholarship Fund (2008)

Joan and Wade Webster Scholarship Fund (1996)

Women's Life List Scholarship Fund (2005)

The following students received scholarships July 1, 2010 - June 30, 2011:

Ellie and Michael Agresta Scholarship Fund
Casey Brooks
Alexander Creeden
Madeleine Mayer
Rosemary Dungan
Alexandra Orischak

Larry and Kay Bangs Charitable Fund
Hunter Anderson
Stephen Bradley
Alexander Creeden
Connor Dafler
Jack Duane
Desiree Ford
Zack Frazier
Deshara Gadson
Jeff Homad
Angel Jones
Nicole King
Zachary Kiritsy
Michelle Kohler
Leslie Layne
George Lee
Francis (Trey) O'Leary
Samantha Paris
Lauren Pence
Kenny Robinson
Shayla Simmons
Devana Stewart
Sherice Walker
Shacria Williams
Dakota Wilson

Fred and Susan Breidenbach Scholarship Fund
Michael Bonifacio
Victoria Flores
Jayna Kuhlken
Kim-Anh Nguyen
Tammy Nguyen
Vi Nguyen
Huy Phan
Mihn Phan
Christopher Sioufi
Collin Sommer
Jennifer Torres
My-Lan Tran
Rebecca Vosters

British Open Pub Scholarship Fund
Shannon Ray
Madeleine Mayer
Alisha Groves

Arnold Fields Community Endowment Fund
Jakisha Butts
Tiffany Marchyshyn

Gulfstream Goldie Glenn Scholarship Program
Courtney Beck
Tea Bibeti
Crystal Buman
James Coleman
Chris Delso

Sophie Dunne
Naundie Eason
Heather Farmer
Joshua Futch
James Gallagher
Anna Beth Havenar
Courtney Hicks
Shelby Hines
John Howard
Paul Kimbal
Kent Kirkman
Kevin Lin
Andrea Luebke
William McGee
Peter McGee
Brock Mosley
Jennie Murphy
Sandra Nazareth
Thien Nguyen
Khiem David Nguyen
Megan O'Malley
Lauren Perdue
Taylor Roberson
S. Lenae Simpson
Laura Simpson
William (Cole) Skinner
Steven Smalley
Emily Smith
Elisabeth Smith
Morgan Strickland
Benjamin Tantarella
Evan Thompson
Madison Torres
Craig Torres
Monica Wery

Jr. Jazz Foundation Fund
Garrett Burke

Jeff Katon Scholarship Fund
Emily Natoli
Lauren Stickle

Kathy's Race Scholarship Fund
Madeleine M. Mayer

James L. Krum Memorial Scholarship Fund
Christopher Austin
Amanda Blair
Casey Brooks
Taylor Brown
Gioia DiBartolomeo
Rosemary Dungan
Alanna Gillis
Alyssa Gillis
Margaret Hancock
Victoria Iwora
Daniel Jones
Aaron Jones
Madeleine Mayer
Maira McCammon
Marissa Nichols
Andrew Nickerl
Samantha Paris
Aaron Schroeder
William Turner
Eric Wooster

Mildred M. Landback Memorial Scholarship
Casey Brooks
Jose Calderon-Chaves
Richard (R.J.) Jenkins
Justin Keller
Tiffany Miller
Kiona Perry
Kelsey Phillips
Giannina Picasso
Holli Selman
Elmis Turcios

Bonnie Miller-Smith Scholarship Fund
Denise Black
Heidi Brewer
Julia Grindle
Ian Pelletier
Kayte Proper
Viktoria Staples
Tyler Weymouth

Mina Larson and Mandas Mulrain Scholarship Fund
Justin Keller

Oak Advisors, LLC Scholarship of Excellence
Bailey Davis

Okatie Rotary Club Scholarship Fund
Lauren Lowell
Shawanda Stokes

TidePointe Community Charitable Fund
Bernard Sanders
Shauntia Gregory
Joseph Obuba

Joan and Wade Webster Scholarship Fund
Taylor Brown
Sean Creeden
Jennifer Roberts Dolin
Molly Gehrt
Brien Kurtz
Marissa Nichols
Janel Raquet
Alexander Sheppard
Victoria Strait
William Turner

BUILDING STRONGER COMMUNITIES

To build stronger communities, the Community Foundation of the Lowcountry works with a broad base of donors, nonprofits and volunteers throughout the Lowcountry. We disbursed \$2.9 million in FY2011 to more than 200 nonprofits and 146 students.

These distributions represent the objectives of our Board of Trustees and the philanthropic interests of our donors:

- Arts and Culture
- Community Development
- Education
- Environment
- Health
- Human Services
- Religious Organizations
- Scholarships

Competitive Grants

The Community Foundation's grant recipients are as diverse as the communities we serve. Our broad focus and flexible approach bring opportunities for change to local communities

Community Impact Grants are designed to stimulate and help launch new programs and projects; or to help focus, enhance, and/or expand an organization's existing programs and services while Community Investment Grants are designed as an investment in a large capital project which is a critical enhancement to the mission of the nonprofit organization.

The following organizations were awarded competitive grants:

- American Red Cross
- Beaufort County School District
- Bluffton Self Help
- Daufuskie Island Conservancy
- Daufuskie Island Historical Foundation
- Deep Well
- Friends of the Rivers
- Hilton Head Island Safe Harbour
- Hilton Head Regional Habitat for Humanity
- Hope Haven of the Lowcountry
- Mental Health Association of Beaufort and Jasper Counties
- Mitchelville Preservation Project Fund
- Public Library Foundation of Beaufort County
- Room at the Inn of the Carolinas
- Technical College of the Lowcountry Foundation
- YANA Club of Hilton Head Island

Organization Development Grants are designed to retain a consultant to help existing nonprofits strengthen themselves organizationally, increasing their capacity to govern and achieve long-term sustainability.

The following organizations received Organization Development Grants:

- Bluffton Jasper Volunteers in Medicine Clinic
- Bluffton Self Help, Inc.
- Daufuskie Island Conservancy
- Family Promise of Beaufort County
- Mitchelville Preservation Project Fund
- National Alliance on Mental Illness-BC
- Neighborhood Outreach Connection
- Palmetto Animal League
- Seabrook of Hilton Head

BUSINESS PARTNERS

Business partners make their impact by setting up charitable funds at the Community Foundation of the Lowcountry or contributing through our sponsorships program

Thank you to the following business partners who are committed to strengthening the Lowcountry in partnership with the Community Foundation of the Lowcountry:

Through June 30, 2011

Sponsorship program donors

Atlantic Community Bank

BB&T

Boys Arnold & Company

Karp, Ronning and Tindol

Peters, Murdaugh, Parker, Eltzroth & Detrick

Funds

Beaufort County School District Education Foundation Fund

British Open Pub Scholarship Fund

Hargray Caring Coins Foundation Fund

Junior Jazz Foundation Fund/Jazz Corner

Gulfstream Goldie Glenn Scholarship Program

Oak Advisors – Oak Advisors Scholarship Fund

Smith Stearns Tennis Academy Scholarship Fund

Cora Bett Thomas Realty – South Carolina Giving Fund

For Sponsors of the Public Art Exhibition, please visit page 10.

There are also many business sponsors that support events held by individual funds, and they are honored at those events.

PROFESSIONAL ADVISOR SOCIETY

Am duciusdant. Milliqu oditas simaiorit, nulluptatur, tem escille strunto iundis qui oditiam a doluptam illab ilita delique qui natumque nem elia suntionsed qui ut arum doluptu riatur a sum debit moloriti ut dolupti re volupid quide eiciminctem sunt quosse lam re ad quis que et volo erro magnimento que veles dolor audaest andit exeri officit ut magnatur reicae sitate laccum, se porio. Tiorehendel iumet ut lique nonsendicae proviti nvelit ommo officiis eat ipsaniasped ut enis dolorepro volore, torro que veruptur?Anu inte hos inatandam tantera timorum publist eritero ati, no.

INVESTMENT MANAGEMENT

The Community Foundation of the Lowcountry's investment portfolio is under the direct oversight of the Board of Trustees.

The Finance and Investment Committee, whose members have been selected for their extensive background and expertise in finance and investment, is responsible for recommending asset allocation parameters, selecting investment managers, and monitoring their performance. In addition to our individual management firms, the Community Foundation has retained Fund Evaluation Group, of Cincinnati, Ohio, to assist our Finance and Investment Committee in recommending asset managers and monitoring and evaluating manager performance.

The Community Foundation maintains a commitment to a total return investment philosophy, including an endowment spending policy to ensure the ongoing viability of funds. Any investment return earned over the spending policy is added to principal, thus combating inflation, overcoming down markets, and continuing to grow endowments, all for the benefit of grantees.

SUMMARY OF FINANCIALS

	2011	2010
Assets		
Cash and cash equivalents	\$ 1,542,972	\$ 1,665,536
Pledges receivable	288,097	345,328
Assets held - charitable lead trust	-	82,062
Assets held - charitable remainder trusts	2,383,361	2,110,298
Investments	37,635,698	30,721,070
Property and equipment, net	654,443	697,357
Other assets	-	9,450
Total Assets	\$ 42,504,561	\$ 35,631,101

Liabilities

Accounts payable and accrued expenses	29,199	24,781
Grants payable	394,830	302,803
Annuities payable	1,797,728	1,483,390
Liability under unitrust agreements	976,856	1,112,569
Funds held for others - agency endowments	2,748,721	2,085,397
Total Liabilities	\$ 5,947,334	\$ 5,018,940

Net Assets

Unrestricted	30,612,161	30,612,161
Temporarily restricted	-	-
Permanently restricted	-	-
Total Net Assets	36,557,227	30,612,161

Total Liabilities and Net Assets \$ 42,504,561 \$ 35,631,101

Changes in Unrestricted Net Assets Revenues

Contributions received	\$ 3,047,424	\$ 1,564,906
Net realized and unrealized gains (losses)	7,015,615	3,712,043
Rental income	23,180	22,471
Other	427,444	307,262
Total Revenues	\$ 10,513,663	5,606,682

Expenses and Support

Grants paid	2,908,011	3,701,286
Salaries and benefits	569,326	573,311
Professional and administrative fees	471,373	433,730
Supplies and other	232,476	236,893
Changes in value of split interest agreements	344,496	(233,703)
Depreciation	42,915	44,957
Total Expenses	4,568,597	4,756,474

Increase (decrease) in unrestricted net assets 5,945,066 850,208

Increase (decrease) in net assets 5,945,066 850,208

Net assets at beginning of year 30,612,161 29,761,953

Net assets at end of year \$ 36,557,227 \$ 30,612,161

STAFF

Carl L. Conklin,
Vice President for Finance
and Administration

Bobbie Fertig,
Donor Services Associate

Anita Miles,
Administrative Assistant

Emmy B. Rooney,
Vice President for Development
and Donor Services

Jennifer Blair Smith,
Office Assistant

Cynthia Smith, Ph.D.,
Vice President for Grantmaking
and Community Leadership

Denise K. Spencer,
President and CEO

Carolyn S. Torgersen,
Vice President for Marketing
and Communications

CONSULTANTS

Legal Counsel

Benjamin T. White
Partner, Alston & Bird

Independent Auditors

Karp, Ronning & Tindol

Investment Consultants

Fund Evaluation Group

ACKNOWLEDGEMENTS

Design
World Design Marketing

Writer/Editor
Carolyn S. Torgersen,
VP of Marketing and
Communications

Photo Credits
Pages 8,10,13,17
Photography by Anne

Page 11
Beaufort County School District

Page 12
Hilton Head Island Safe Harbour



COMMUNITY FOUNDATION
OF THE LOWCOUNTRY

4 Northridge Drive, Suite A
Post Office Box 23019
Hilton Head Island, SC
29925-3019

843.681.9100
www.cf-lowcountry.org



Confirmed in compliance with national
standards for U.S. community foundations